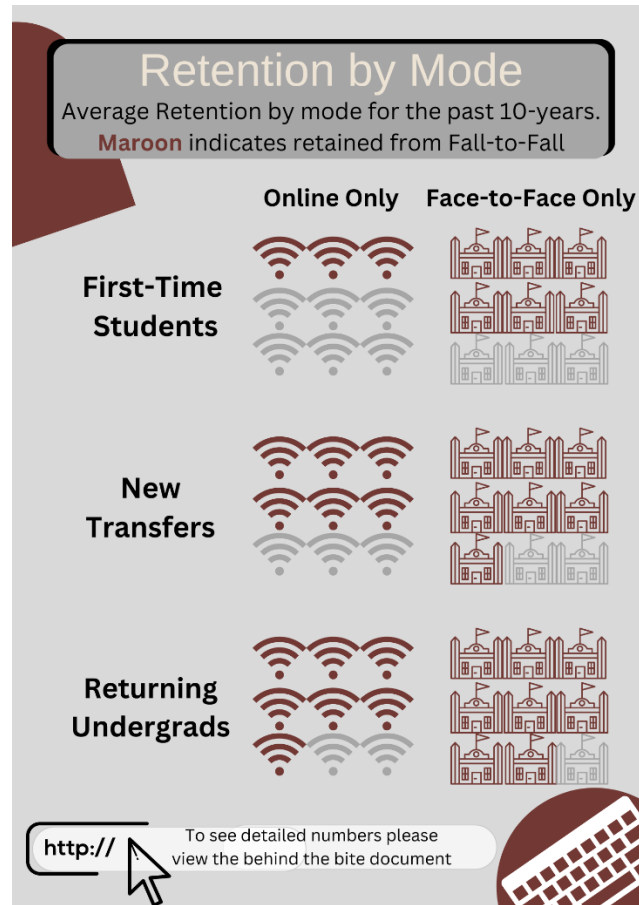


## Data Bite # 20 – Retention by Class Mode



### Retention by Class Mode

Online courses have become increasingly popular in recent years. This data bite looks at retention by student status for Online Only and In Person Only students. Data for mixed mediums is presented below as well.

Retention was looked at on a Fall-to-Fall basis over the past 10 years (2012 to 2022).

It was found that in all three categories (First-Time Freshman, New Transfers and Registered Last Semester Students) that retention was better when a student attended all face-to-face classes. However, the difference in retention rates varied greatly based on student's enrollment status.

First-time in college students experienced the greatest disadvantage when only online classes were taken. An average of 28.0% decrease in retention was seen between a first-time in college student taking all in face-to-face classes vs. all online classes.

The retention gap between mediums for the two other categories of students is not as drastic, but still noteworthy. New Transfers, on average, showed a 7.4% decrease when all online. Registered Last Semester students showed, on average, a 10.0% decrease when attending all online.

## Data Bite # 20 – Retention by Class Mode

### First-Time in College Retention

Year	Online	In Person
2012	0.0%	66.6%
2013	56.6%	66.7%
2014	0.0%	63.7%
2015	29.4%	66.3%
2016	50.0%	64.6%
2017	41.9%	67.7%
2018	65.0%	68.7%
2019	64.2%	69.0%
2020	40.7%	60.1%
2021	35.1%	69.1%
2022	38.8	68.5%
<b>Average</b>	<b>38.4%</b>	<b>66.5%</b>

### New Transfer Students Retention

Year	Online	In Person
2012	58.7%	75.1%
2013	71.9%	77.2%
2014	71.3%	72.3%
2015	69.7%	76.2%
2016	66.1%	74.9%
2017	71.2%	73.5%
2018	67.5%	75.5%
2019	73.6%	79.1%
2020	69.8%	78.6%
2021	66.6%	78.1%
2022	68.1%	80.6%
<b>Average</b>	<b>68.6%</b>	<b>76.5%</b>

### Registered Last Semester Retention

Year	Online	In Person
2012	67.2%	83.8%
2013	71.5%	82.9%
2014	69.6%	82.3%
2015	73.7%	82.7%
2016	72.1%	83.2%
2017	76.3%	83.8%
2018	76.2%	84.9%
2019	75.4%	85.4%
2020	74.5%	84.3%
2021	77.8%	84.2%
2022	72.9%	86.7%
<b>Average</b>	<b>73.4%</b>	<b>83.8%</b>

### Combined Status Retention Results

Year	Online	In Person	Mixed
2012	64.0%	76.6%	81.3%
2013	71.4%	76.4%	81.4%
2014	69.6%	74.3%	78.3%
2015	72.2%	75.8%	78.8%
2016	70.2%	75.3%	80.2%
2017	74.5%	76.8%	82.6%
2018	73.7%	77.5%	82.9%
2019	74.8%	78.1%	81.2%
2020	71.9%	74.6%	74.7%
2021	73.5%	76.8%	82.1%
2022	72.0%	78.4%	80.8%
<b>Average</b>	<b>71.6%</b>	<b>76.2%</b>	<b>80.4%</b>

